



Moo-velous stable lighting

Ammonia-resistant, species-appropriate and efficient

Lighting solutions for agriculture and animal husbandry

LUMINAIRES FOR ANIMAL HUSBANDRY

PERFECT STABLE LIGHTING – MORE YIELD

Light not only controls the biorhythm of humans but also of animals. Good, species-appropriate stall lighting promotes the well-being and health of the animals and has a positive effect on their performance.



DAIRY CATTLE/CATTLE FARMING

Cows and cattle reacts insecurely and stressed to rapid changes in light levels. Good, uniform lighting without light/dark zones, for example between the stable, driveway and milking areas, has a positive effect on animal welfare and increases the daily milk yield of dairy cows, especially in the darker months of the year.



PIG FARMING

In pig farming, optimised lighting leads to better visual perception of the animals and thus ensures a significantly lower level of stress and aggression. The animals are more balanced, the meat has higher quality and the yields are higher.



POULTRY FARMING

Poultry needs flicker-free light. Infinitely dimmable light with a low flicker index is therefore essential for species-appropriate poultry farming. It has a calming effect, reduces cannibalism and mortality rates and thus increases the yield.



BETTER WORKING CONDITIONS IN THE STALL

Good lighting creates better working conditions in the stall. The eyes have to strain less, animal inspections are easier and the risk of accidents at work is reduced. In addition, the use of modern, efficient and long-lasting LED lights saves a considerable amount of energy and maintenance cost – a relief for the environment and your wallet.

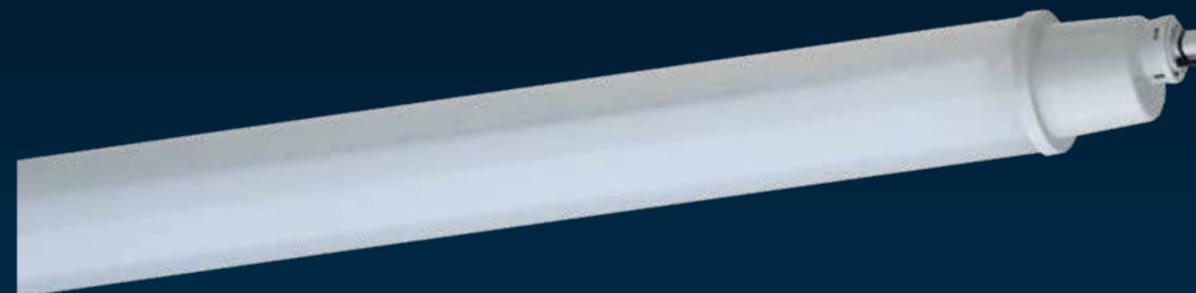
DON'T USE RED LIGHT AS A NIGHT LIGHT!

Cattle eyesight is better than humans at dusk and therefore does not need lighting to orientate themselves in the stable at night. Experts therefore advise not to use red night illumination, but instead to use a white night illumination with a maximum of 10 lux and only switch this on when necessary (inspection rounds).

In addition, the farmer cannot carry out a suitable animal health check under red light upfront, because he cannot identify injuries with blood wounds.

PRIMO XR LW

HERMETICALLY SEALED – THE PERFECT SOLUTION



Extreme ammonia exposure, permanently high humidity, intensive cleaning with high-pressure cleaners or steam jets – the PRIMO XR doesn't care.

Ammonia and moisture have not the slightest chance of penetrating the luminaire because it is hermetically sealed! No molding, no gluing – the PRIMO XR is welded!

The PMMA tube and end caps are firmly connected to each other and the integrated FastConnect plug connection system is perfectly sealed. The LED and ECG are therefore permanently and absolutely securely protected against harmful influences.

UNBEATABLE ADVANTAGES

EXTREMELY PROTECTED

- extremely impermeable to harmful gases
- permanently resistant against ammonia
- IPX9K tested (high-pressure/steam jet cleaning)
- water pressure-tight (IP68, 3 m/30 min)

HIGHLY COMFORTABLE

- homogeneous illumination and pleasant light perception
- low-glare light due to frosted tube
- flicker-free light to prevent stress and promote animal welfare

QUICKLY INSTALLED

- fast mains connection thanks to integrated FastConnect quick plug-in connection
- simple, flexible installation thanks to sliding retaining clips



Type	Connected Load [W]	Luminous flux [lm]	Luminous efficacy [lm/W]	Substitute for*
107 15L34 XR LW	28	3,660	131	1 x 58 W
107 12L42 XR LW	30	3,900	130	2 x 36 W
107 15L60 XR LW	43	5,700	133	2 x 58 W

Also available as a **DIMD version with dimming function via DALI** especially for use in poultry farming in accordance with the German Animal Welfare and Livestock Farming Ordinance.

(Rounded values, technical developments reserved.)

* The given information is for rough orientation only. In each individual case a lighting calculation is necessary.

¹ DLG stands for German Agricultural Society

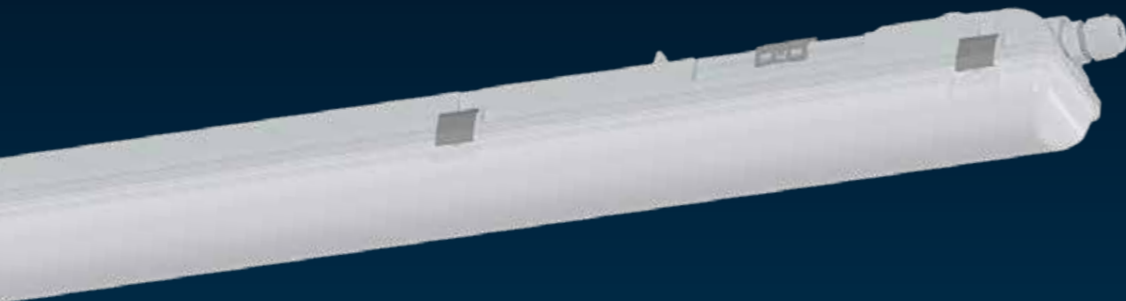
More info:



Technical details

LUXANO 2 LW

THE COST-EFFECTIVE SOLUTION



All lights in the SCHUCH programme are united by their outstanding quality. The LUXANO 2 LW – as a price-optimised solution for barn lighting – also keeps this promise of quality.

Particularly high-quality, resistant LED modules with an additional protective coating offer a high level of safety when used in ammonia-contaminated environments. This is also confirmed by the DLG¹ test mark and the classification as "resistant to ammonia". At the express request of SCHUCH, the luminous flux before and after ammonia fumigation was measured for the first time in addition to the standard DLG¹ test scope. With a simulated service life of around 10 years, the LUXANO 2 LW achieved an excellent value with a luminous flux retention of almost 90%!

UNBEATABLE ADVANTAGES

HIGHLY RESISTANT

- resistant LED modules with additional protective coating
- corrosion-proof encapsulated electronic ballast
- highly ammonia-resistant and suitable for high-pressure cleaning according to DLG** test report

HIGHLY COMFORTABLE

- homogeneous illumination and pleasant light perception
- low-glare light due to frosted diffuser
- flicker-free light to prevent stress and promote animal welfare

EXTREMELY EFFICIENT AND EASY TO INSTALL

- luminous efficacy up to 174 lm/W
- fastFix quick mounting system with variable fixing distances
- variable cable entry at the front, lengthways and at the top



Type	Connected load [W]	Luminous flux [lm]	Luminous efficacy [lm/W]	Substitute for*
167 12L42G2 LW	23	4,000	174	1 x 58 W
167 15L60G2 LW	37	6,140	166	2 x 58 W

Also available as a **DIMD version with dimming function via DALI** especially for use in poultry farming in accordance with the German Animal Welfare and Livestock Farming Ordinance.

(Rounded values, technical developments reserved.)

* The given information is for rough orientation only. In each individual case a lighting calculation is necessary.

¹ DLG stands for German Agricultural Society

DUEVO

THE OPTIMUM SOLUTION FOR HIGH CEILING BUILDINGS



For the lighting of high ceiling stalls with larger mounting heights – from approx. 6 m – the use of LED stall lighting is the most economical solution.

Robustly built and with increased resistance to ammonia vapors, the DUEVO is just right for this application. Equipped with high-quality components, it is powerful and highly efficient. The LED housing and control gear housing are thermally separated to ensure excellent heat dissipation. The perfect basis for a long service life!

TWO VERSIONS - ONE CONCEPT

DUEVO ER – with increased resistance to ammonia vapors for use in cattle and horse stalls

DUEVO LW – extensively modified especially for use in pig stalls and thus particularly well protected against the increased ammonia load

UNBEATABLE ADVANTAGES

- flicker-free light to prevent stress and promote animal welfare
- highly efficient with luminous efficacies of up to 150 lm/W
- extremely durable > 100,000 hours at maximum permissible ambient temperature +50 °C



Type	Connected load [W]	Luminous flux [lm]	Luminous efficacy [lm/W]	Substitute for*
3301 L210 ER	135	20,200	150	HIE 400
3301 L210 LW	135	20,200	150	HIE 400

Also available as a **DIMD version with dimming function via DALI** especially for use in poultry farming in accordance with the German Animal Welfare and Livestock Farming Ordinance.

(Rounded values, technical developments reserved.)

* The given information is for rough orientation only. In each individual case a lighting calculation is necessary.

More info:



Technical details

More info:



Technical details

UNIQUE LIGHT SENSOR FOR AGRICULTURE

Presence- or daylight-dependent control and regulation of LED lighting can be easily realized with our unique **DALI 2 light sensor LIMAS Line XR DS**, which was specially developed for noxious gas environments such as ammonia-contaminated stalls.

Follow us:



... with passion for excellent lighting!



Adolf Schuch GmbH • Mainzer Str. 172 • 67547 Worms www.schuch.de