



Simply ingenious and versatile

LUXANO 2 – the multi-talent

The right solution for every requirement

QUALITY HAS NO ALTERNATIVE

What makes our LUXANO 2 damp-proof light fitting so successful? The answer is simple: the well-known high quality of SCHUCH at extraordinarily attractive prices. It is also a true all-rounder with its wide range of variants. Its high quality in particular enables it to be used in a wide range of applications. We emphasise the high reliability of the LUXANO 2 with a 5-year guarantee.

Our LUXANO 2 proves that high quality and a favourable price need not be opposites.

FASTFIX QUICK MOUNTING SYSTEM

with adjustable stainless steel retaining clips for variable fixing distances, incl. bracket for chain suspension

VARIOUS CABLE ENTRY OPTIONS

at the front and on the top of the housing in the center or on the side

ROBUST HOUSING

made of glass fiber reinforced polyester with high wall thickness

SUSTAINABLE

control gear and LED module can be replaced on site by a qualified person

QUALITY LUMINAIRE

with high-quality components from renowned brand manufacturers

STAINLESS STEEL FASTENERS

SATINATED DIFFUSER

with high wall thickness, homogeneous illumination, pleasant light perception, good glare limitation



Simple assembly

- FastFix quick-mounting system, with stainless steel retaining clips for variable mounting distances without having to open the luminaire
- Optional FastConnect quick plug-in connection
- Fast, cost-effective front-side in/out wiring possible instead of classic through-wiring



Economical operation

- High system efficiency up to 153 lm/W
- Long service life L80 > 50,000 h at maximum ambient temperature
- Extremely long service life of the luminaire thanks to replaceable components



Environmentally friendly and future-proof

- No disposable luminaire, components can be replaced on site
- Use of LED modules according to Zhaga standard
- Long-term availability of spare parts, min. 10 years after series discontinuation

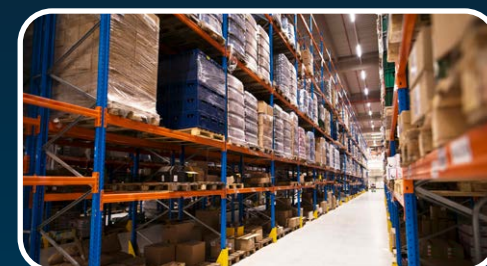
LUXANO 2 – WIDE RANGE OF VARIANTS

EXTREMELY EFFICIENT AND FLEXIBLE



As the TOP version of the range, the **LUXANO 2 HE VARIO** combines two important benefits: flexibility and maximum efficiency. Its luminous flux can be adjusted at any time without tools using a dip switch in the luminaire and its energy consumption is significantly reduced thanks to the highly efficient LED system.

HIGH LUMINOUS FLUX FOR MORE LIGHT



The latest **LUXANO 2 15L100** version with almost 11,000 lm luminous flux enables the luminaire to be used in areas with increased visual requirements or at mounting heights of up to 4.5 m, thus opening up new areas of application.

SMART CONTROLLED VIA RADIO



Intelligently controlled luminaires desired but no DALI cable available? Then there is the **LUXANO 2 HE CS**, which can be controlled wirelessly and extremely conveniently via our LIMAS Air light management system using an app. An extensive portfolio of sensors and actuators is available for this purpose.

WELL-EQUIPPED FOR OUTDOOR USE



Specially modified for outdoor use, the **LUXANO 2 AUS** luminaire easily withstands even the highest demands in unprotected outdoor areas.

IN THE TEMPERATURE RANGE FROM -40°C TO +50°C



Whether extremely hot or super cold - no problem for the **LUXANO 2 T40 H50**. It can be used in cold stores or areas with high process waste heat, as well as in wide temperature ranges where temperatures can fluctuate significantly.

STRONG FOR STABLES



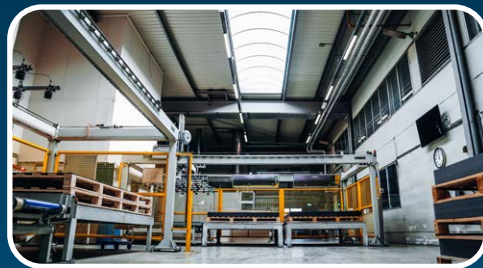
Thanks to highly resistant LED modules with additional protective coating, our **LUXANO 2 LW** is permanently resistant to ammonia. This DLG-tested version for agriculture and animal husbandry is therefore ideally suited for use in areas with increased ammonia exposure, such as pigsties.

WITH THAT EXTRA BIT OF RESILIENCE



Whether for dairy cattle, cattle or horse stables, but especially for use in poultry farming, the **LUXANO 2 ER DIMD** has that little bit of extra resilience and, with its dimming properties, complies with the relevant animal welfare regulations for poultry farming.

DIMMED FROM 100% TO 0%



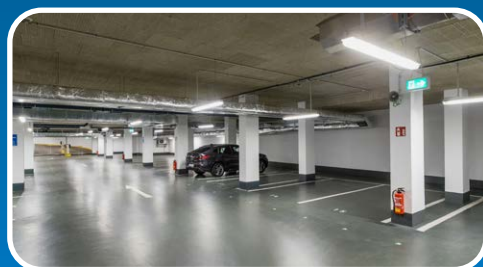
The dimmable versions **LUXANO 2 DIMD/DIMC** and **DIMC-Z** not only enable simple, infinitely variable control of the luminous flux. They are also the basis for connecting the LIMAS Line light management system for intelligent control of the light as required.

CONFORMS TO FOOD STANDARDS



Modified for use in the food industry, food processing companies and their suppliers, **LUXANO 2 IFS** meets the strict requirements of the International Featured Standard Food (IFS). It can therefore also be used in companies that have to comply with HACCP guidelines.

SAFELY OUT OF THE DANGER ZONE



With the emergency lighting versions **LUXANO 2 ZB** (for connection to central battery systems or emergency lighting networks) and **LUXANO 2 MA** (with built-in battery), you can always keep a safe eye on the escape route. Central monitoring of self-contained luminaires in accordance with DIN VDE V 0108-100-1 is reliable and extremely convenient with the LIMAS Line ESC light management system.



THE RIGHT SOLUTION FOR EVERY REQUIREMENT

Convince yourself of the quality, ease of installation and the attractive price-performance ratio of all **LUXANO 2** variants!



Follow us:



... with passion for excellent lighting!



Adolf Schuch GmbH • Mainzer Str. 172 • 67547 Worms www.schuch.de