

EX LUMINAIRES



**Focused view**

**with experience and competence**

**Ex-protected luminaires from Schuch**

 **SCHUCH**

# EXPERIENCE MAKES THE DIFFERENCE

The SCHUCH brand stands for many success stories, but especially for the success story of explosion-proof luminaires.

The protection of explosion-hazarded workplaces places much higher and more demanding requirements on a luminaire manufacturer than the use of technical luminaires in other industrial areas. The development, design and manufacture of explosion protected luminaires therefore requires a high level of expertise, a thorough knowledge of standards and operator regulations and a wealth of experience. Mistakes and negligence due to lack of knowledge or experience can have existential consequences for customers.

”

1900

No company can look back on a longer experience in explosion protected luminaires than SCHUCH, having started in the field of explosion protection as early as 1900. Over generations we have built up a wealth of experience that is unique in the industry.

Carlo Wolf — Management

“

# COMPETENCE PROVIDES SECURITY

Competence has to be earned. That is why, from the very beginning, we have focused on concentrating all our activities in-house. A strategy that we continue to pursue today.



## Explosion Protection Competence Center

- Research
- Development
- Innovation
- Certified laboratory center
- Standardization work
- Collaboration with universities and test centres
- State-of-the-art technology
- Customised special solutions
- In-house tool manufacturing
- Close cooperation with LED and plastic manufacturers

## Participation in national and international standardization committees

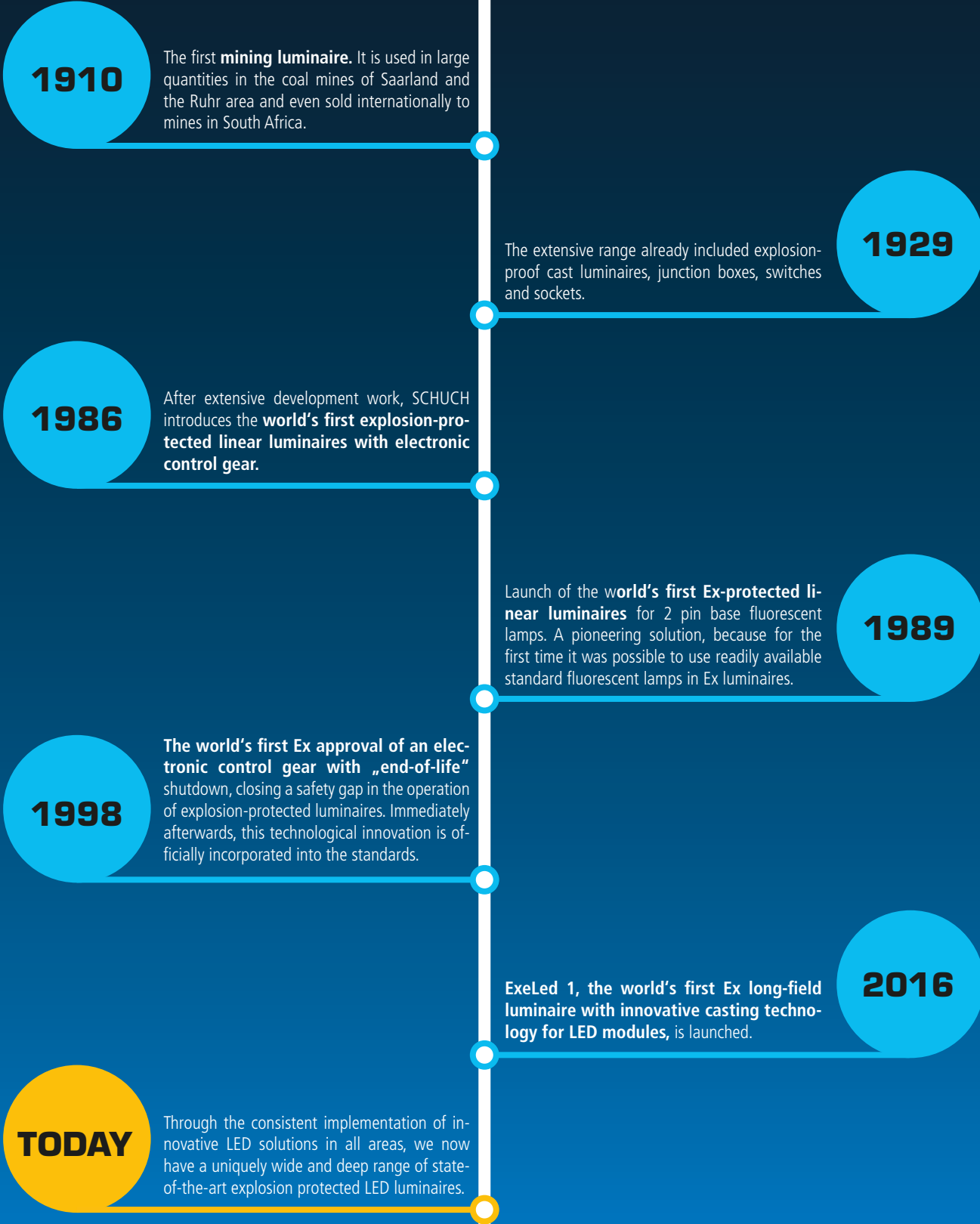
Early knowledge of developments in the standardization field is of paramount importance for the design of explosion-protected luminaires. We have been very active in this area for decades.

Currently, the head of our explosion protection development department is the chairman of the German working group and the international IEC working group for explosion-protected luminaires, the two most important bodies in this field.



# MARKET-DEFINING INNOVATIONS

SCHUCH is a pioneer and innovation leader in the field of explosion protected luminaires. In particular, the development of modern Ex long range luminaires is inextricably linked with the name of SCHUCH.



Excerpt of our milestones in the field of explosion-protected luminaires.



# TRUST IS OUR FOUNDATION

## Satisfied customers are the best proof of good work.

Our customers around the world value the high quality and reliability of our products. They rely on our expertise and over 100 years of experience to give them the peace of mind they need in hazardous environments. These customers include not only the major players in the oil, gas, chemical and pharmaceutical industries, but also many large, medium and small companies in all sectors with hazardous areas and equipment. Many have relied on SCHUCH Ex luminaires for decades, some for over a century.



# QUALITY MADE IN GERMANY

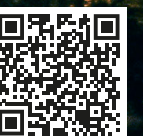
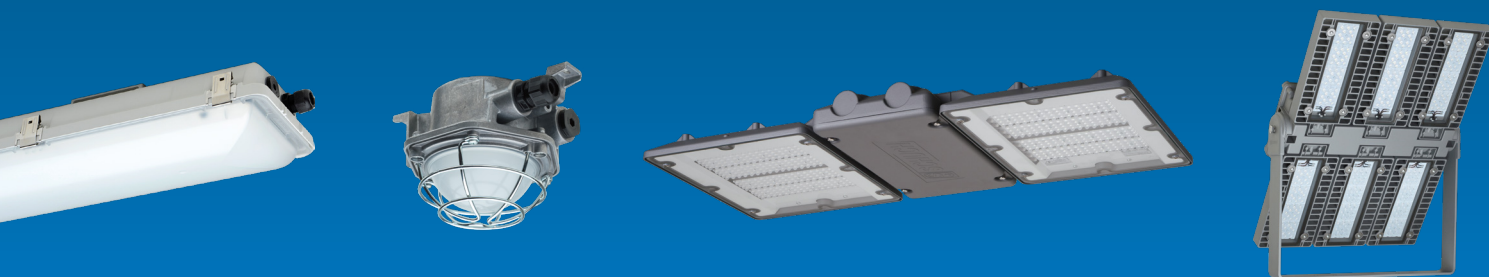
Since the beginning of our company, we have set the highest standards for the quality of our products.

Through

- our own research and development departments
- the VDE-certified laboratory center with highly precise measurement and testing equipment
- decades-long development partnerships
- trusting collaboration with renowned suppliers
- concentration of manufacturing in Worms
- high manufacturing depth
- and our highly motivated employees

we have full control over all quality-relevant processes.

All explosion-protected luminaires are 100% our own developments, manufactured with our own tools in Worms, making them distinctive branded products made in Germany.





Follow us:



**...with passion for excellent lighting!**



Adolf Schuch GmbH • Mainzer Str. 172 • 67547 Worms [www.schuch.de](http://www.schuch.de)